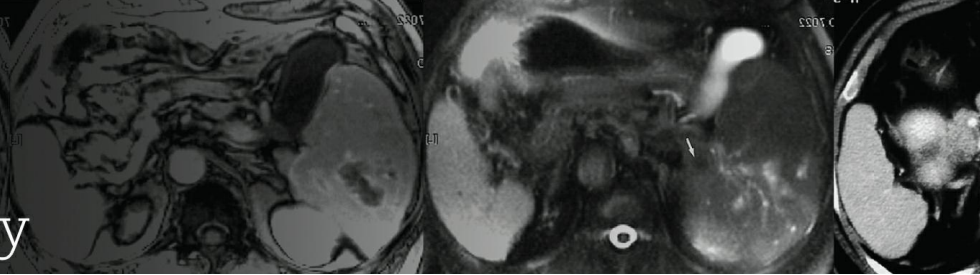


Mercy  
Radiology



## **Patient Information for MRI Liver/Pelvis**

**Please arrive 15 minutes prior to your appointment time.**

Please continue with prescribed medications.

Nothing to eat or drink for four hours prior to your examination.

If you are a diabetic please bring with you any medications or food to be taken following your examination.

During the examination we may need to administer contrast into a vein in your arm.

This will be discussed when making your appointment and/or at the time of your appointment.

It is important to bring any previous x-rays or scans to your appointment.

If you have any questions regarding this appointment please do not hesitate to contact us on (09) 6235858.

We look forward to seeing you.

Regards,  
MRI department.